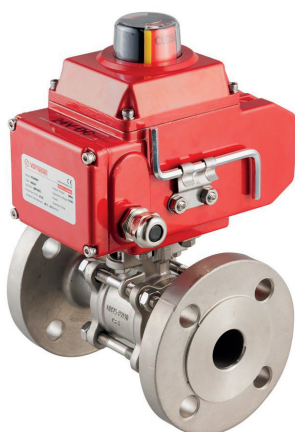
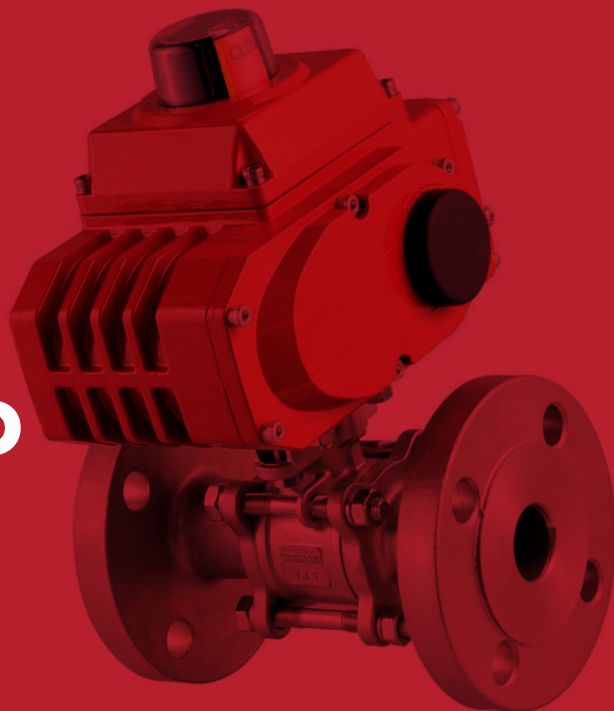


ELECTRIC ACTUATED 3 PIECES FLANGE STAINLESS STEEL BALL VALVE



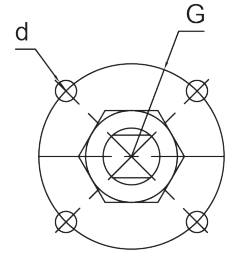
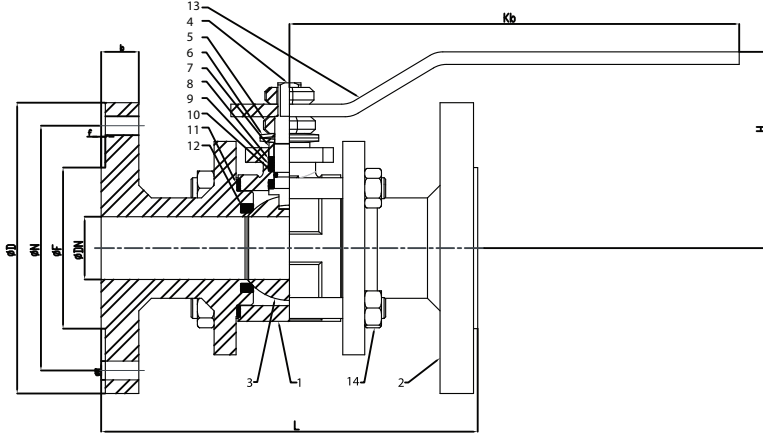
Ball Valve Details

Body	: SS316
Ball	: SS316
Cover Flange	: ISO5211
Working Pressure	: PN16 or PN40
Flange Connection	: PN16 or PN40
Way	: 2/2
Size	: 1/2" ... 4"
Applications	: • Chemical Industry • For acids and chemical controls • For purpose of drain and stopper at the end of the line • Treatment plants • Stainless Steel Resistant Fluid Types
Sealing	: PTFE

Electric Actuator Details

Type	: On-off
Protection Class	: IP68
Dehumidification	: 5 W Heater Against Humidity
Working Voltage	: 220VAC, 24VDC
Working Temperature	: -30°C...+60°C
Torque Range	: 50Nm...100 Nm
Body	: Aluminium Casting
Valve Connection	: Suitable for specified connection dimensions of ISO 5211
Position Indicator	: Open / Close
Alternative Operation	: Manual Handle

► BALL VALVE SIZE



ACTUATOR CONNECTION

NO	PART NAME	STAINLESS STEEL BALL VALVE	
1	BODY	S.C. AISI 304- AISI 316	S.P. AISI 304- AISI 316
		DN 15 - DN 100	DN 125 - DN 200
2	CAP	S.C., S.P. AISI 304- AISI 316	S.P. AISI 304- AISI 316
		DN 15 - DN 65	DN 80 - DN 200
3	BALL	AISI 304	AISI 316
4	BALL SHAFT	AISI 304	AISI 316
5	NUT	A2 STAINLESS	
6	STAMP	STAINLESS	
7	RING	STAINLESS	
8	NECK GASKET	PTFE	
9	SHAFT STEEL RING	STAINLESS	
10	ORING	VITON	
11	BALL GASKET	PTFE	
12	VALVE HANDLE	AISI 304	
13	NUT	AISI 304	

S.C.: SENSITIVE CASTING S.P.: STEEL PRODUCTION

SIZE	DIMENSIONS				CONNECTION SIZE PN16						CONNECTION SIZE PN40						ACTUATOR CONNECT.	WEIGHT Kg	
	DN	L	Kb	H	f	D	b	N	M	F	MN	D	b	N	M	F			MN
DN 15	130	160	70	2	95	14	65	14	45	4	95	16	65	14	45	4	36	M5	2,8
DN 20	150	160	75	2	105	16	75	14	58	4	105	18	75	14	58	4	36	M5	3,8
DN 25	160	180	85	2	115	16	85	14	68	4	115	18	85	14	68	4	42	M5	5
DN 32	180	215	100	2	140	16	100	18	78	4	140	18	100	18	78	4	42	M5	7
DN 40	200	215	115	2	150	16	110	18	88	4	150	18	110	18	88	4	50	M6	9,5
DN 50	230	295	125	3	165	18	125	18	102	4	165	20	125	18	102	4	50	M6	13
DN 65	290	295	145	3	185	18	145	18	122	4	185	22	145	18	122	4	70	M8	20
DN 80	310	400	155	3	200	20	160	18	138	8	200	24	160	18	138	8	70	M8	26,5
DN 100	350	400	170	3	220	20	180	18	158	8	235	24	190	22	162	8	102	M10	42

Ball Valve Code : Tork-KV.905F
 Electric Actuated Ball Valve Code : EAV-905F